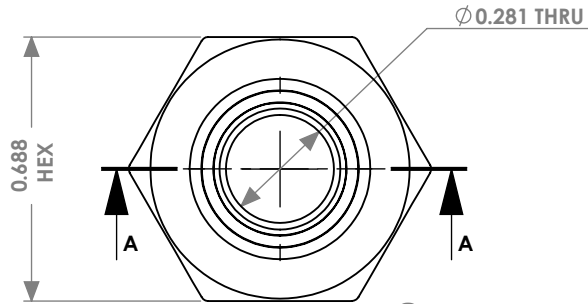


**ADDITIONAL VENDOR REQUIREMENT:**  
**FIRST ARTICLE SAMPLE FOR EACH ORDER**  
**MUST BE APPROVED BY MB STURGIS**  
**PRIOR TO PRODUCTION.**

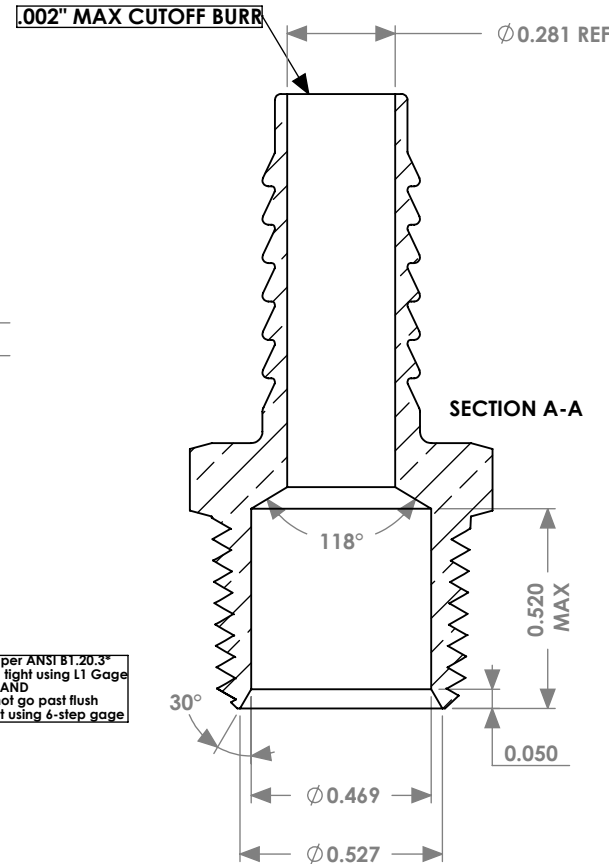
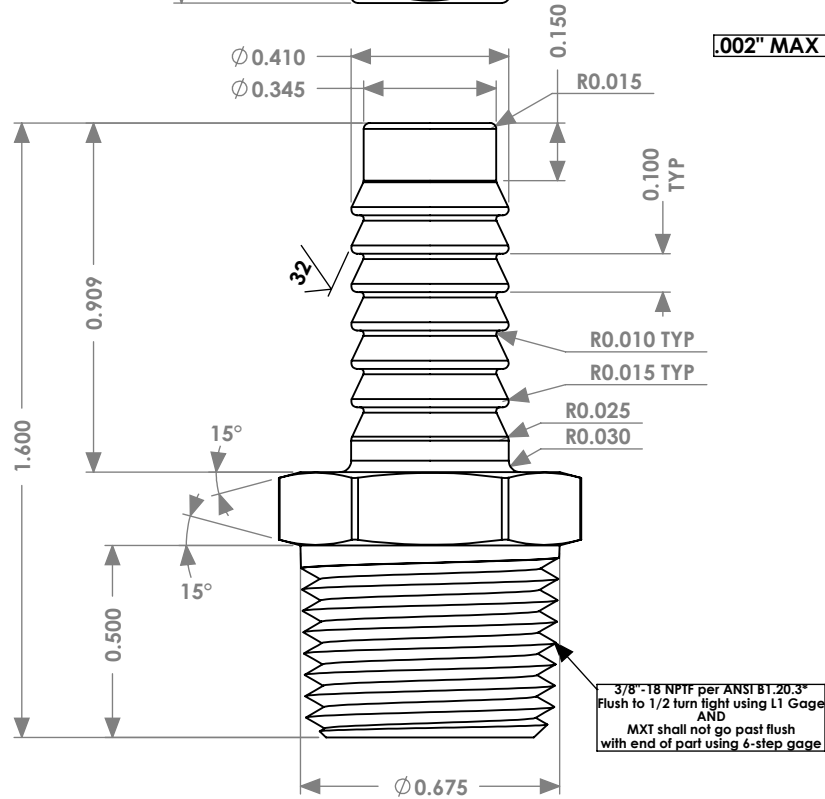
Rev	Date	Properties
D00	06-28-2011	Change to standard 7-barb. DG
D01	10-15-2014	Change THREADS TO NPTF DAG
E00	02-10-2017	Add 6-barb w/ lead-in DG



**MB STURGIS INCOMING INSPECTION REQUIREMENT:**  
**MINIMUM ACCEPTED QUALITY LEVEL (AQL) FOR THIS PART**  
**SHALL BE 1.0 AT GENERAL INSPECTION LEVEL I**

**VENDOR INSPECTION REQUIREMENT:**  
**ONE OF EVERY BOX QUANTITY OF UNITS PRODUCED MUST BE**  
**INSPECTED FOR DEFECTS AND CRITICAL DIMENSIONS**  
**AND INITIALED BY VENDOR QA PERSONNEL.**  
**VENDOR IS REQUIRED TO SUPPLY THIS DOCUMENTATION**  
**WITH EVERY SHIPMENT.**

**PARTS SHALL BE EITHER BULK-PACKED OR LAYER-PACKED**  
**AND**  
**SEALED IN A PLASTIC BAG-LINED BOX**  
**WITH A DISSECCANT PACKET.**



**Purchasing Requirements(new PO):**  
**Supplier(s) is required to provide the following at the**  
**beginning of every purchase order:**

1. Material certification from the material supplier.
2. Certificate of Conformance from the part supplier to include:
  - Dimensional data & Cpk for a 6 piece sample (Asterisk dimensions only)
  - Pass/Fail data for thread gage check

**Purchasing Requirements(shipment):**  
**Supplier(s) is required to provide the following at the**  
**beginning of every shipment:**  
 Material certification from the material supplier.

**VENDOR DOCUMENTATION CHECKLIST:**  
**(REQUIRED FOR EACH SHIPMENT)**  
 \_\_\_\_\_ PART QA INSPECTION LOG  
 \_\_\_\_\_ MATERIAL CERTIFICATIONS

**INCOMING INSPECTION LOG:**  
**(REQUIRED FOR EACH SHIPMENT)**  
 \_\_\_\_\_ DATE  
 \_\_\_\_\_ SHIPMENT QUANTITY  
 \_\_\_\_\_ SAMPLE SIZE  
 \_\_\_\_\_ DIMENSIONAL CHECK  
 \_\_\_\_\_ NOTES CHECK  
 COMMENTS: \_\_\_\_\_

- Notes:**
1. Shall be clean and free of dirt, chips and oil.
  2. Burrs not to exceed .002".
  3. Must pass Ammonia Vapor Test per ASTM B85M-95,PH-9.8-10.
  4. Shall be packaged to protect against damage in shipment.
  5. Sealing and exposed surfaces shall be free of chatter.

**Estimated Weight: .0510 Pounds**  
**Estimated Volume: .1660 In<sup>3</sup>**

UNCONTROLLED DOCUMENT IF PRINTED  
 MASTER COPY ON MB STURGIS SERVER



This drawing and the information it contains are proprietary and confidential. Disclosure or copying requires the written approval of:  
 MB Sturgis, Inc.  
 535 Fee Fee Road  
 Maryland Heights, MD 21043  
 (314) 291-6645

Unless Otherwise Specified  
 X +/- .015  
 .XX +/- .010  
 .XXX +/- .005  
 Angles +/- 1 Deg  
 Concentricity +/- .010  
 Break Sharp Edges .005 R/Chamfer  
 All Dimensions Are in Inches  
 Quality Assurance Provisions Sampling Plan ANSI Z1.4  
 Attribute +/-.005 >+/--.005 <+/--.005 Go Ring No GO Ring Surface  
 AQL 1.0;S-2 2.5;S-2 6.5;S-2 2.5;S-4 6.5;S-4 2.5;S-4

Material: CA 36000 Brass(Supplier to provide certification)  
 Drawn By: DAG Date: 06-28-2011  
 Checked By: DAG Date: 2-10-2017

Title: HOSE FITTING - 3/8" MNPTF X  
 3/8" 6-BARB with LEAD-IN  
 Scale: 2:1 Part Number: 401412 Rev: E00