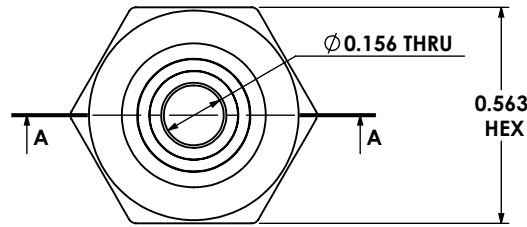


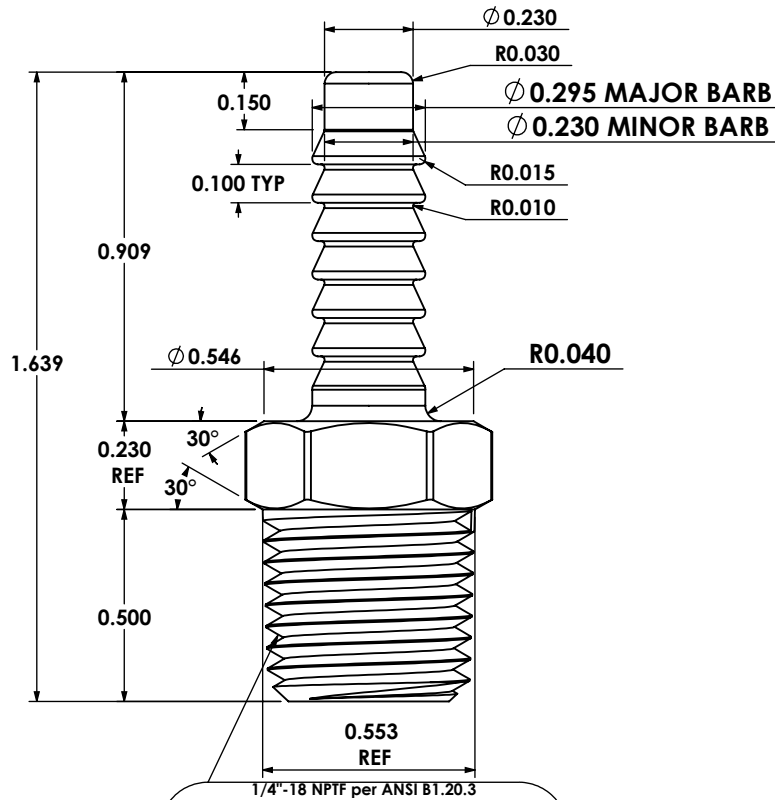
**ADDITIONAL VENDOR REQUIREMENT:
FIRST ARTICLE SAMPLE FOR EACH ORDER
MUST BE APPROVED BY MB STURGIS
PRIOR TO PRODUCTION.**

PARTS SHALL BE SEALED IN A PLASTIC BAG LINED BOX.

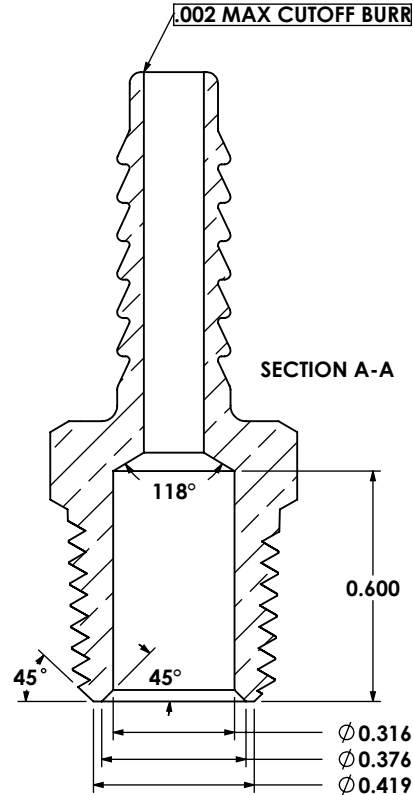
Rev	Date	Properties
F00	03-16-2011	CHANGE TO STUBBY 7-BARB. DG
F01	01-05-2015	ADD PURCHASING AND QA REQ. & NPTF DG
G00	03-16-2016	CHNG TO 6 BARB W/ LEAD IN. DG
G01	04-24-2017	Change Barb OD. DG



**MB STURGIS INCOMING INSPECTION REQUIREMENT:
MINIMUM ACCEPTED QUALITY LEVEL (AQL) FOR THIS PART
SHALL BE 1.0 AT GENERAL INSPECTION LEVEL I**



Flush to 1/2 turn tight using L1 Ring Gage
AND
End of part shall not go past MNT
using 6-step ring gage



**VENDOR DOCUMENTATION CHECKLIST:
(REQUIRED FOR EACH SHIPMENT)**
____ PART QA INSPECTION LOG
____ MATERIAL CERTIFICATIONS

Purchasing Requirements(new PO):
Supplier(s) is required to provide the following at the beginning of every purchase order:
1. Material certification from the material supplier.
2. Certificate of Conformance from the part supplier to include:
- Dimensional data & Cpk for a 6 piece sample (Asterisk dimensions only)
- Pass/Fail data for thread gage check

Purchasing Requirements(shipment):
Supplier(s) is required to provide the following at the beginning of every shipment:
Material certification from the material supplier.

- Notes:**
1. Shall be clean and free of dirt, chips and oil.
 2. Burrs not to exceed .002".
 3. Must pass Ammonia Vapor Test per ASTM B85M-95,PH-9.8-10.
 4. Shall be packaged to protect against damage in shipment.
 5. Pipe thread must be made in accordance with ANSI/ASME B1.20.3.
 6. Pipe thread shall meet requirements as stated above.
 7. Parts shall be packaged to protect against moisture and corrosion.

**ADDITIONAL VENDOR REQUIREMENT:
FIRST ARTICLE SAMPLE FOR EACH ORDER
MUST BE APPROVED BY MB STURGIS
PRIOR TO PRODUCTION.**

Approximate Volume = .14024 Cubic Inches
Approximate Weight = .04307 Pounds



This drawing and the information it contains are proprietary and confidential. Disclosure or copying requires the written approval of:

MB Sturgis, Inc.
535 Fee Fee Road
Maryland Heights, MO 63043
(314) 291-6445

Unless Otherwise Specified
X +/- .015
.XX +/- .010
.XXX +/- .005

Angles +/- 1 Deg
Concentricity +/- .010
Break Sharp Edges .005 R/Chamfer
All Dimensions Are in Inches

Quality Assurance Provisions Sampling Plan ANSI Z1.4
Attribute +/- .005 >1%(.005) <1%(.005) Go Ring No Go Ring Surface
AQL 1.0;S-2 2.5;S-2 .651 2.5;S-4 6.5;S-4 2.5;S-4

Material: 360 BRASS

Drawn By: DAG

Date: 03-16-2011

Checked By: DAG

Date: 05-24-2017

Title: HOSE END FITTING 1/4" MALE NPTF X
1/4" 6-BARB W/ LEAD IN

Scale: 2:1

Part Number: 401326

Rev: G01

UNCONTROLLED DOCUMENT IF PRINTED
MASTER COPY ON MB STURGIS SERVER